

Ref	FOOTPATH LMIL70 PROJECT. Ref HWG 1/Spec
Issue	SPECIFICATION Issue 4.1 28th March 2018
Author	Cllr P Shepherd

LYDIARD MILLICENT PARISH COUNCIL HIGHWAYS WORKING GROUP



# FOOTPATH LMIL70 REGENERATION. PROJECT SPECIFICATION AND CHANGE CONTROL

Issue 4.1 28th March 2018.

**This issue 4.1 is the PROPOSAL  
for the Council meeting on 5<sup>th</sup> April 2018**

## 1. AUTHORITY

- 1.1 DECISION: Proposal Paper accepted by LMPC 1<sup>st</sup> February 2018.
- 1.2 CHANGE CONTROL: Highways Working Group and full Council as appropriate
- 1.3 SPECIFICATION: shared with WC Senior Rights of Way Warden at a site meeting on 26<sup>th</sup> February 2018 (DB and PS). WC to be sent all future issues of this specification.

## 2. OBJECTIVES

The objectives of this project are to:

- Bring the footpath back to a satisfactory condition for use by the general public allowing access to The Street from the Right of Way LMIL70 that runs all the way from Lydiard Park;
- Provide an alternative safe walking route from The Sun Inn car park to The Street in the direction of the church without the need to cross The Street twice or without the need to cross private land at the Sun Inn or the garages; and
- Regenerate to a standard where it is likely to remain useable with heavier utilisation and in poor weather.

## 3. SPECIFICATION

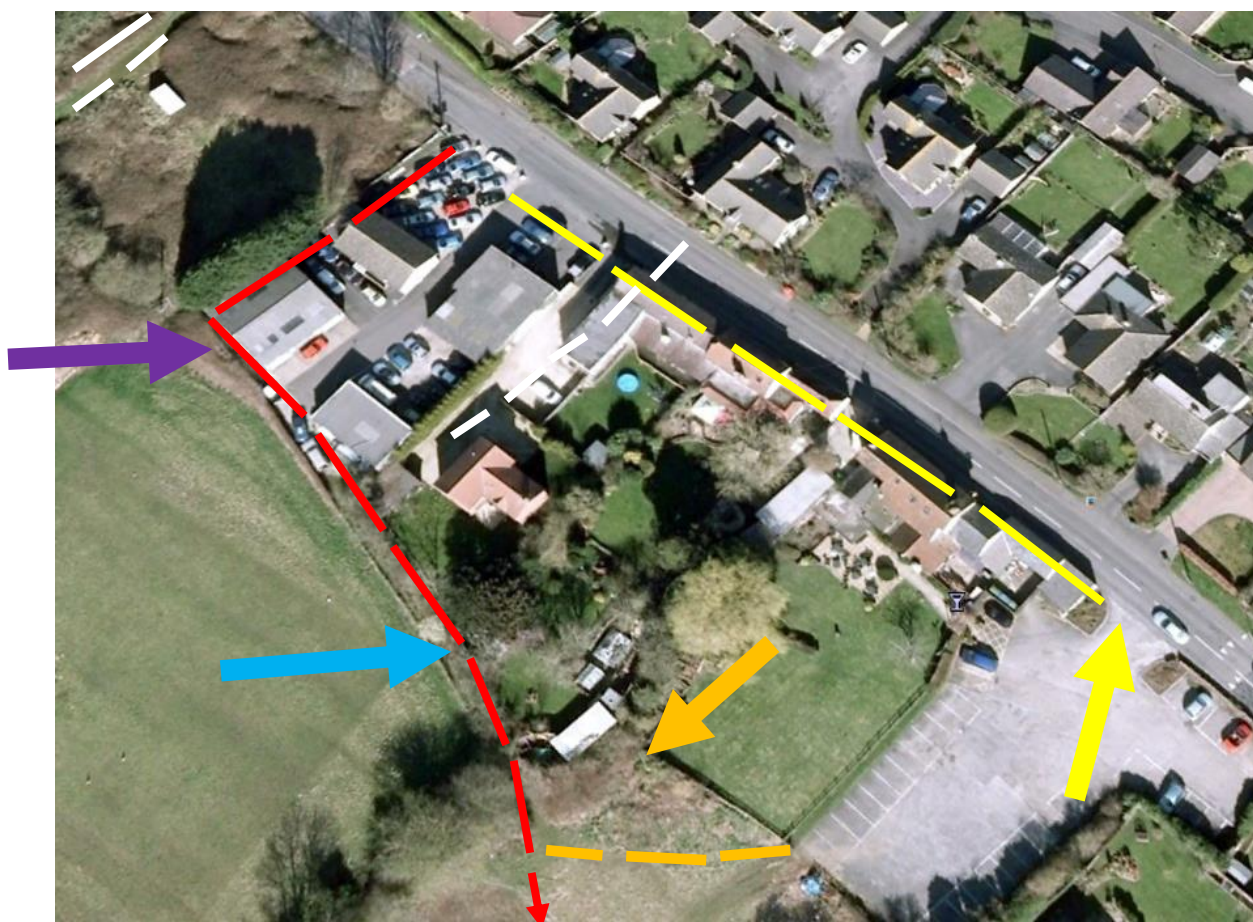
### 3.1 WRITTEN SPECIFICATION

- i) Restore the path to a useable condition.
- ii) Prepare ground to suitable levels and remove material as necessary,
- iii) Place geotextile to a width of 1200mm and a depth of at least 150mm type 1 or scalplings and compacted as necessary. Two bids for pathway material are required: one for type 1 or scalplings and a second alternative bid for road planings (the latter is a WC recommendation).
- iv) Use larch edging to retain pathway materials as necessary.
- v) Remove the stile at the Sun Inn end of the pathway (as recommended by WC). This will allow easy access for pushchairs. Retain fencing.

Ref	FOOTPATH LMIL70 PROJECT. Ref HWG 1/Spec
Issue	SPECIFICATION Issue 4.1 28th March 2018
Author	Cllr P Shepherd

- vi) Heavy overhead tree growth at the Sun Inn end of the path shown in illustrations 9a and 9b. It is planned for this tree growth to be retained as a feature on the footpath. The centreline of the footpath can be moved to one side to provide adequate head clearance for walkers.
- vii) Cut back brambles in the field that are shown in illustration 5. Consultation with landowner is required as to the agreed extent of cut-back of this vegetation in the field. **Action: DB**
- viii) Provide lapped timber fence in the area shown by the green lines in illustration 4 to be fixed between the existing concrete posts. Height to fence to match adjacent timber fence.
- ix) Provide white painted line to highway standard at edge of garage properties as indicated in illustration 3.
- x) Provide white markings to show commercial tenants the limits of the public right of way as shown in illustrations 8. (The previous specification of fencing here is not recommended by WC)
- xi) Provide new pedestrian lockable gates, one between pub car park and the field (orange arrow in 3.2 below) and one between the path and the field (purple arrow in 3.2 below)
- xii) Provide new right of way signs (3 in total). These are free of charge from WC. Later and in addition we may apply additional information signs that include the new parish logo to show the parish's commitment to maintaining the path.

### 3.2 ILLUSTRATIONS FOR SPECIFICATION



**Illustration 1. Pathway layout with key to symbols in the table below**

Ref	FOOTPATH LMIL70 PROJECT. Ref HWG 1/Spec
Issue	SPECIFICATION Issue 4.1 28th March 2018
Author	Cllr P Shepherd

Red dashed line	Wiltshire Footpath LMIL70 from the field behind The Sun Inn to The Street. The red dashed line at the bottom of the picture indicates the direction of the Right of Way to Lydiard Park
Yellow dashed line	South side of The Street with no footpath and so unsuitable for pedestrians
White dashed line	Unauthorised route taken by walkers through garage properties owing to footpath being blocked
Yellow arrow	Existing informal pedestrian crossing point from The Sun Inn car park; hazardous for most parts of the day
Orange arrow	New lockable pedestrian gate from pub car park to field
Orange dashed line	Informal access from pub car park to the Right of Way (red dashed line)
Blue arrow	The location of low overhanging tree growth (see illustration 9)
Purple arrow	New lockable pedestrian gate from path to field



**Illustration 2:** Wiltshire Council Public Rights of Way map for footpath LMIL70 (© WC)

Ref	FOOTPATH LMIL70 PROJECT. Ref HWG 1/Spec
Issue	SPECIFICATION Issue 4.1 28th March 2018
Author	Cllr P Shepherd



**Illustration 3:** White line to help maintain the right of way limits. Path width determined by timber fence behind the white caravan.



**Illustration 4:** Cut back corner to original concrete posts to provide more space for walkers as indicated by green lines



**Illustration 5:** Remove rotten corner post and other timber posts and re-use existing concrete posts.

Ref	FOOTPATH LMIL70 PROJECT. Ref HWG 1/Spec
Issue	SPECIFICATION Issue 4.1 28th March 2018
Author	Cllr P Shepherd



**Illustrations 6 and 7:** Obstructions to be moved (some already gone as at January 18)



**Illustration 8:** White line to help car sales tenant see and maintain the right of way limits or boundary marked by larch edging as recommended by WC Senior Rights of Way Warden

Ref	FOOTPATH LMIL70 PROJECT. Ref HWG 1/Spec
Issue	SPECIFICATION Issue 4.1 28th March 2018
Author	Cllr P Shepherd



**Illustrations 9a and 9b:** Overhead tree growth to be cut out.  
Shown looking from each direction.  
The tree is at head height of about 69" (1.75m) at the centre of the path

Ref	FOOTPATH LMIL70 PROJECT. Ref HWG 1/Spec
Issue	SPECIFICATION Issue 4.1 28th March 2018
Author	Cllr P Shepherd



**Illustrations 10, 11 and 12**

provided by WC Senior Rights of Way Warden after site meeting with Parish Clerk on 5<sup>th</sup> December 2017 showing the debris to be cleared by adjacent tenants

## 4. CHANGE CONTROL

In this section we record feedback received about the project specification and also record the outcomes and decisions.

### 4.1 Feedback from Howard, landlord of The Sun Inn.

PS had a discussion with Howard on 3 Feb 18 having learnt from Andre that Howard would like to provide some feedback. Howard made the following points to me:

- He supports the plan to regenerate the footpath.
- He continues to allow parents of schoolchildren to use the pub car park and that is not planned to change.
- He has a concern that the access to the right of way from the car park might become a right of way because of regular public usage, but does not object to the ongoing informal access of the footpath from the car park. (Note that Howard rents the field from his pub owners)

**Comment from PS:** Howard's feedback is noted and accepted. The right of way that runs all the way from Lydiard Park has no proper end point into The Street unless the pathway is regenerated. At present walkers are forced to walk over private property either at the pub or at the garages to find their way on to or from The Street and this cannot be right. Nevertheless Howard is happy that the route is seen informally as an alternative route to school. He has a concern on behalf of his landlord, who owns the field, that the small section between the pub car park (see orange dashed line in illustration 1) and the right of way (red dashed line) could itself become a right of way due to regular public usage. However, the council is advised that

Ref	FOOTPATH LMIL70 PROJECT. Ref HWG 1/Spec
Issue	SPECIFICATION Issue 4.1 28th March 2018
Author	Cllr P Shepherd

this unlikely scenario can be avoided by legal closure of that part of the proposed path on one day each year under the provisions of Dedicating the Way. Note: from personal local knowledge this route (marked by orange dashed line in 3.2) has been regularly used by walkers for at least 25 years.

Circulated to HWG (date)	Comments received from HWG? Y/N	Project specification change approved by HWG Chair (Y/N date)	Does this need to be approved by full council?
3 Feb 18	No	Yes by virtue of No Comment by 16 Feb 18	No

4.2 As a gesture of goodwill to adjacent landowners, metal lockable pedestrian gates are to be installed at locations shown by orange and purple arrows in 3.2 above. The first is at the boundary of the pub car park and the adjacent field (the pub and field are owned by the same company) and will replace a life-expired stile. This has been discussed with the pub landlord who will confer with his landlord and revert **Action: PS.** The second will replace “unofficial” access equipment (shown in illustration 10a) that is used by a tenant of the adjacent field in order to access the field and care for horses. This is to be discussed with the landowner **Action: DB.** Note that the provision of these gates was discussed with WC at the site meeting of 26<sup>th</sup> February and agreed to be a suitable course of action having regard to the various pathway design issues.

Circulated to HWG (date)	Comments received from HWG? Y/N	Project specification change approved by HWG Chair (Y/N date)	Does this need to be approved by full council?
27 Feb 18	Yes	Yes 27 <sup>th</sup> March 18	Yes on 5 <sup>th</sup> April 2018

## APPENDIX (Paraphrased extract from The Arboricultural Association text)

The ‘Bird Nesting Season’ is officially from February until August (Natural England) and it is recommended that vegetation works (tree or hedge cutting) or site clearance should be done outside of the nesting season. The busiest time for nesting birds is from 1st March until 31st July and of course varies according to species, etc.

Contractors must aim to avoid impact to nesting birds and infringement of the *Wildlife and Countryside Act 1981* and breaching the *European Habitats Directive 1992/Nesting Birds Directive*.

When tree or vegetation clearance work has to be undertaken during the nesting season, a pre works survey needs to be carried out by a suitably competent person. As a general rule, it should be assumed that birds will be nesting in trees, and it is down to that person to assess, record and confirm that any works carried out in the management of trees and other vegetation has not disturbed actively nesting birds.